

## NABL

National Accreditation Board  
for Testing and Calibration  
Laboratories

NABL certificates are awarded to testing and calibration laboratories that successfully meet the accreditation criteria set by NABL. Accreditation is granted after a thorough assessment of the laboratory's infrastructure, personnel competence, quality management systems, and adherence to international standards.

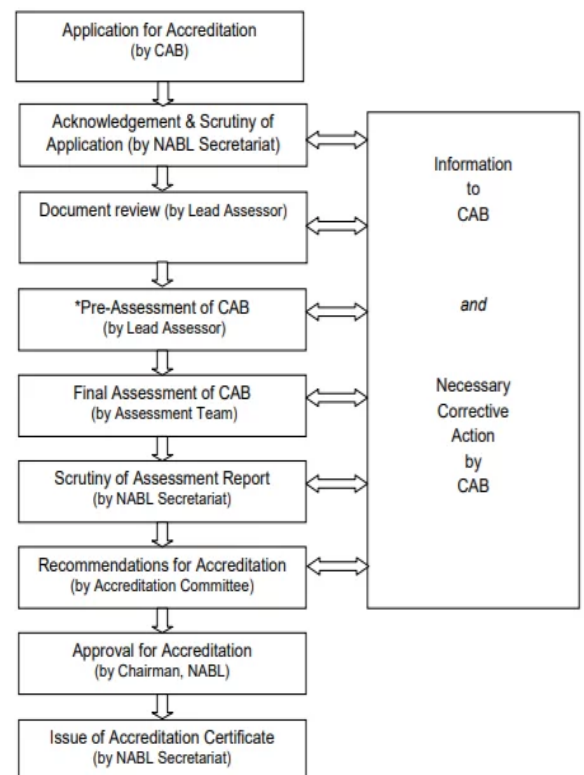
### Benefits of Accreditation:

- ❖ International recognition,
- ❖ Improving customer trust & market acceptance,
- ❖ Time and money efficient,
- ❖ Enhanced customer confidence and satisfaction,
- ❖ Continual improvements & better operational control,
- ❖ Ensuring reliable and accurate testing,
- ❖ Cost Reduction
- ❖ Enhancing regulatory compliance
- ❖ Prevent loss due to defects
- ❖ Supporting international trade with recognized testing standards.

### Road Map for NABL Consultancy Service

- ❖ **Gap Analysis** of existing laboratory practices.
- ❖ **Training Program**
  - ISO 17025 system requirements
  - Measurement & Method validation & Equipment handling
  - NABL specific documentation & application process
- ❖ **Document preparation**
  - Quality Manual, - SOPs & Work Instructions
  - Test/Calibration Method validation procedures
  - Templates for reports, logs, and registers
- ❖ **LMS (Laboratory Management System) Implementation**
  - Implementation of quality procedures across lab operations
  - Measurement Uncertainty calculations
  - Ensuring traceability of measurements and equipment calibration
- ❖ **Internal Audit**
  - Conducting Internal Audit
  - Closing the NC's raised at the time of IQA
- ❖ **Management Reviews**
  - Assisting the clients in organizing & conducting the reviews
- ❖ **Post-Accreditation Maintenance**
  - Surveillance audit preparation
  - Ongoing system updates, training, renewals etc

### NABL Accreditation Procedure



### Time Estimates, Consultancy & Certification Fees

- **Project Time Span:** 3 – 6 Months
- **Consulting charges** – as per client requirement
- **Certification charges** - Rs. 1.5 to 2.5 L

*Note: Fees will vary according to no. of employees & client sites*

### Post-Accreditation Maintenance

- Surveillance audit preparation
- Ongoing system updates, training, renewals etc